



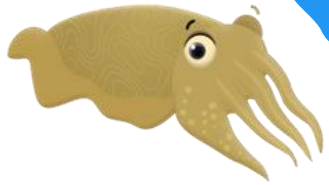
Porci's Ocean Patrol Activity Sheet

Great Southern Reef Map

Can you help to complete this map of the Southern Australian coastline?

How long is South Australia's coastline, including islands? 4204 kms

Add some habitats such as seagrass meadows, seaweeds, and rocky reefs. Fill in and draw the local marine species.



Bottlenose
Dolphin

Southern
Right Whale

Leafy
Seadragon

Little
Penguin

